
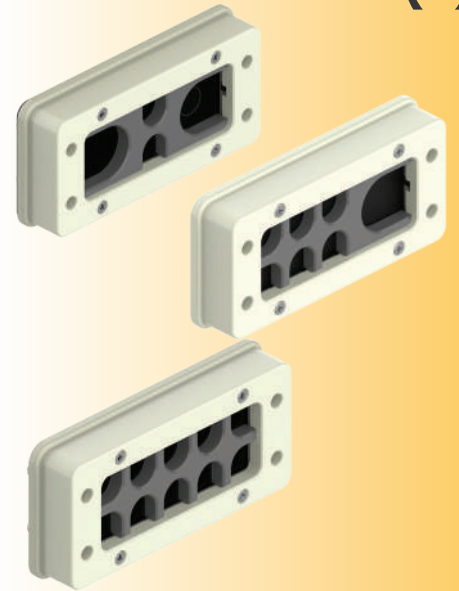


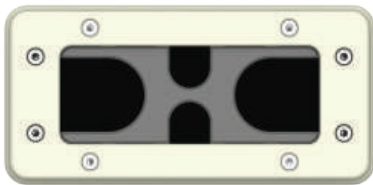
BPA(S)

BPA(S)

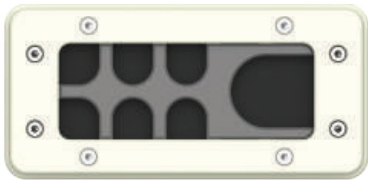
| Product Information | | |
|--|---|--------------------------------|
| <ul style="list-style-type: none"> The BPA cable entry plates are designed for connectorised and of course for non-connectorised cables. They can be used instead of standard cable glands, when the space on the enclosure is limited and also as an economical solution. The grommets are pyramidal and their outer surface shapes are conical. This conicity ensures high strain relief values, when they are compressed into their conical seats. There is no side or back operation. | | |
| Technical Details | | |
| Material | Frames, Plates and Inserts PA Glass Fibre Reinforced Clamping Seals CR (Chloroprene) Main Frame Seal Polyurethane Screws, Locknut Steel Washers (Screws) NBR | |
| Ingress Protection Level | Type 12,13 Type 4X IP66 | |
| Flammability Rate | HB According to UL94 | |
| Operating Temperature | -40 °C to +80 °C | |
| Variants and Calmping Ranges | <ul style="list-style-type: none"> 4 Ways (2 small + 2 large seals) 7 Ways (6 small + 1 large seals) 10 Ways (10 small seals) | |
| Enclosure Cut Out | 112x46 mm | |
| Fixation Screws | M4x0,7x20 mm Fitted with M3 Allen Head | |
| Overall Dimensions | 156,5x75,5x27,2 mm | |
| Approvals | | |
| Certification Body | Certificate Number | Standard |
|  TYPE 4x | E467237 | UL 508A CSA C22.2 NO. 14-18 |
| | | UL 50E |



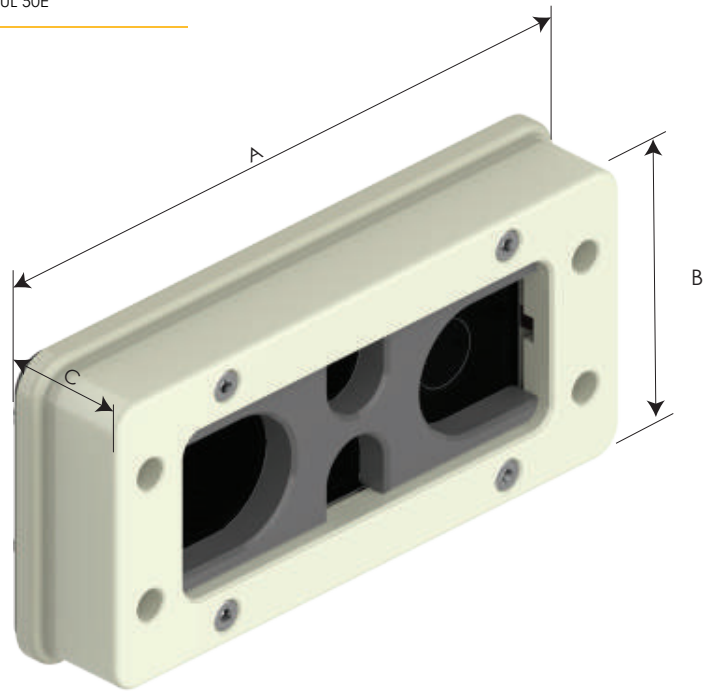
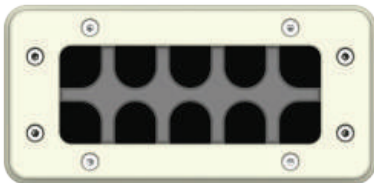
4 Ways



7 Ways



10 Ways

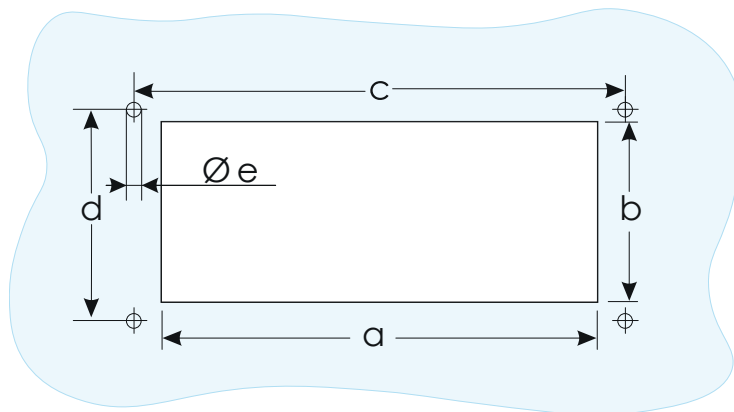
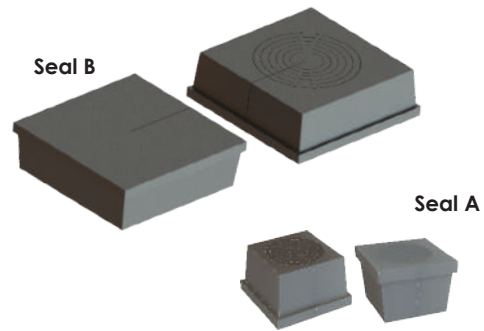


| OVER ALL DIMENSIONS | | | | | | | | |
|---------------------|----------------------|---------------|---------|----------|---------|---------------------|----------------|------------------------|
| Plate Type | No. Of Cable Entries | Seal Quantity | Frame | | | Part Number | | Minimum Order Quantity |
| | | | Width A | Height B | Depth C | RAL 7035 light grey | RAL 9005 black | |
| BPA-S-04 | 4 (2B+2A) | 2A | 156,5 | 75,5 | 27,5 | BPA-S-04-1 | BPA-S-04-2 | - |
| | | 2B | | | | | | - |
| BPA-S-07 | 7 (1B+6A) | 6A | 156,5 | 75,5 | 27,5 | BPA-S-07-1 | BPA-S-07-2 | - |
| | | 1B | | | | | | - |
| BPA-S-10 | 10 (0B+10A) | 10A | 156,5 | 75,5 | 27,5 | BPA-S-10-1 | BPA-S-10-2 | - |
| | | - | | | | | | - |

Each of the parts can be ordered separately.

BPA(S)

| Onion Seal Code | SEAL DIMENSIONS | | | |
|-----------------|-----------------|--------------------|-------------------------|---------------------------|
| | Seal Size | Related Onion Seal | Central Ø After Peeling | Cable Clamping Range Ø mm |
| BPA-S-0009C | A1 | O1-Ø4/Ø5 | 1,0 | 3.5 to 5.5 |
| | | O2-Ø6/Ø7 | 2,0 | 5.5 to 7.5 |
| | | O3-Ø8/Ø9 | 3,0 | 7.5 to 9.5 |
| BPA-S-0010C | A2 | O1-Ø10/Ø11 | 1,0 | 9.5 to 11.5 |
| | | O2-Ø12/Ø13 | 2,0 | 11.5 to 13.5 |
| | | O3-Ø14/Ø15 | 3,0 | 13.5 to 15.5 |
| BPA-S-0011C | B1 | O1-Ø16/Ø17 | 1,0 | 15.5 to 17.5 |
| | | O2-Ø18/Ø19 | 2,0 | 17.5 to 19.5 |
| | | O3-Ø20/21 | 3,0 | 19.5 to 21.5 |
| BPA-S-0012C | B2 | O1-Ø22/23 | 1,0 | 21.5 to 23.5 |
| | | O2-Ø24/25 | 2,0 | 23.5 to 25.5 |
| | | O3-Ø26/27 | 3,0 | 25.5 to 27.5 |
| | | O4-Ø28/29 | 4,0 | 27.5 to 29.5 |



| CUT-OUT DIMENSIONS | | | | | |
|--------------------|-------|------|-------|------|------|
| Plate Type | a mm | b mm | c mm | d mm | e mm |
| BPA-S-04 | 112,0 | 46,0 | 130,0 | 32,0 | 5,0 |
| BPA-S-07 | 112,0 | 46,0 | 130,0 | 32,0 | 5,0 |
| BPA-S-10 | 112,0 | 46,0 | 130,0 | 32,0 | 5,0 |